

# The Fibula Pinning Us All Together

November 2009 – 1420 5<sup>th</sup> Ave, Seattle, WA 98101 – 206.624.6768 – [facerejewelryart.com](http://facerejewelryart.com)

## Congratulations to our Artists!

**Mary Lee Hu** spoke at the University of Washington Suzzallo Library, sponsored by the 2009 Anne Gould Hauberg Libraries – Artist Images Series on Oct. 30<sup>th</sup>.

**emiko oye** is featured as a 'Trend Setter' in this month's *California Home + Design* Holiday Issue. Her work will also be included in the Society of Arts & Crafts, Boston exhibition *From Minimal to Bling* opening November 7<sup>th</sup>.



**Peg Fetter** judged the Shaw Art Fair in St. Louis, October 3, 2009.

The latest edition of the *History of Beads* by Lois Dubin features the work of **Cynthia Toops** on the cover. Cynthia's necklace from the collection of the Bead Museum of Arizona is included inside.



*From Minimal to Bling: Contemporary Studio Jewelry* at the Society of Arts & Crafts, Boston will feature the work of **Trudee Hill** (Nov. 7 – Jan. 2, 2010).

If you're planning to attend the Washington Craft Show (Nov. 6-8) in DC or the Philadelphia Museum of Art Craft Show (Nov. 12-15), don't miss the opportunity to meet **Linda Kindler Priest!**

The work of **Sarah Hood** is currently featured in two shows at the Tacoma Art Museum: *Speaking Parts: Conversations between Works in the Collection* (through Nov. 2010) and *A Concise History of Northwest Art* (through May 2010). The Tacoma Art Museum has also acquired six of Sarah's pieces for their permanent collection, including 'Root' pictured right.



**Seth Papac's** work will be included in the exhibition *to be: (determined) an exhibition of the first five*, Clara Hatton Gallery, Colorado State University, October 26 – November 20.

**Barbara Seidenath** presented her talk 'The Use of Enamels in Jewelry' at the *In Its Time* conference held October 11, 2009 at the Fashion Institute of Technology in NYC.



TURN HEADS! WEAR JEWELRY ART!  
If you wish to receive this newsletter electronically, email us at [facereart@aol.com](mailto:facereart@aol.com)

*Introducing the works of jewelry artists:*



**IRIS ALGOM**  
Vancouver

Reflections of human forms and landscapes, Iris calls her work 'sculptures to wear.'

Price range: \$500 - \$1,650



**DONNA D'AQUINO**  
New York

A full time metalsmith, Donna's minimal wire jewelry has been exhibited internationally.

Price range: \$55 - \$1,200



**KRISTEN ORR  
& GAIL RAPPA**  
Nevada

The thoughtful combination of glass, metal, and gemstones reflects the individual talents of these collaborating artists.

Price range: \$700 - \$1,200



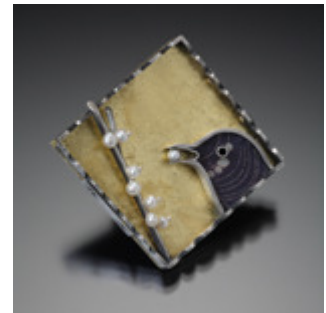
Locket ca 1910 - \$581



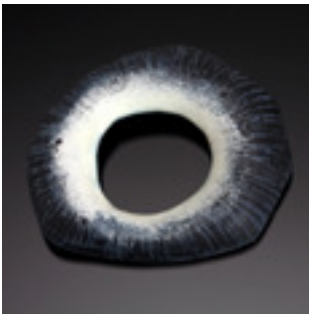
Eve Llyndorah - \$2,742



Ring ca 1930 - \$3,480



Sarah Wilbanks - \$753



Jan Smith - \$387



Earrings ca 1920 - \$688



Mary Lee Hu - \$7,310



Ring ca 1920 - \$6,995



**GREAT GIFTS FOR THE HOLIDAYS!**

TURN HEADS! WEAR JEWELRY ART!

If you wish to receive this newsletter electronically, email us at [facereart@aol.com](mailto:facereart@aol.com)