

The Fibula Pinning Us All Together

February 2010 – 1420 5th Ave, Seattle, WA 98101 – 206.624.6768 – facerejewelryart.com

JuJu Magic

January 27 – February 15, 2010

A contemporary jewelry art show featuring the work of seventeen artists with magic in mind: Allyson Bone, Nancy Bonnema, Ken Bova, Jessica Calderwood, Susan Chin, Christina Goodman, Janice P. Ho, Judith Hoyt, Nicole Jacquard, Maya Kini, Christy Klug, Karen McCreary, Roné Prinz, Gary Schott, Jan Smith, Cindy Sumner, & Cynthia Toops.

Allyson Bone



Maya Kini



Christy Klug



Karen McCreary



Christina Goodman

The opening night lecture and reception were a hit! Jan Smith, Cynthia Toops, and Nancy Bonnema (seen left to right) each spoke about her work.

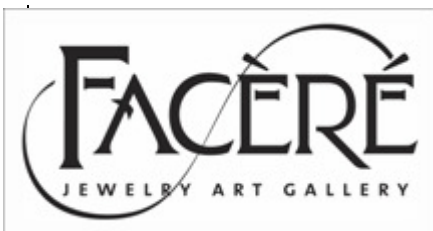


Lorraine Vagner, curator of JuJu Magic, gave an overview of the exhibition's theme and presented the work of participating artists who were unable to



attend the lecture. She looked fetching in a celebratory JuJu Magic necklace (complete with chicken feet and monkey paw imagery) hand-crafted by Facère's very own Susan Welch. Thanks to everyone who attended this event!

Portraits by Gene Olson



TURN HEADS! WEAR JEWELRY ART!
If you wish to receive this newsletter electronically, email us at facereart@aol.com

*How about flowers
for your Valentine?*



Cindy Sumner
\$140



Linda Kindler Priest
\$3,827



Opal & Pearl Ring
ca 1920 \$476



Sarah Wauzynski
\$312



Marcia Meyers
\$2,107



Hiroshi Watanabe
\$310

Congratulations to our artists!

Look for **Davide Bigazzi's** work in the forthcoming publications: *500 Gemstone Jewels*, *Jewelry Box Challenge*, and *Mixed Metal Jewelry Workshop* all from Lark Books!

Mary Hu has been invited by the Shanghai Workers Center for International Exchange to bring a group of professional metalsmiths to China September 10-21, 2010. They will be visiting Shanghai at the time of the International Expo to study Tibetan Minority costumes and jewelry. Anyone interested in more information is invited to contact Mary at m.hu@comcast.net

Nylon Magazine (Mexico) recently featured the jewelry of **Margaux Lange** in a full page spread.

emiko oye will be speaking on a panel at Miami University (Oxford, OH) Feb. 10th, titled "Creativity and Sustainability: A Dialogue." While in Ohio, emiko will teach a professional development workshop, "Top Ten Tips for Post Graduate Success," for Miami U. graduate students. This month, you can also find emiko in the "Voice" section *American Craft*.



↑ **Seth Papac's** piece *Iris – a jewelry portrait* (a chatelaine that holds four necklaces) will be included in the Exhibition in Motion at the Museum of Fine Arts, Houston during the 2010 SNAG conference.

The gallery section of this month's *Art Jewelry* magazine features the work of **Jan Smith**.

Kristi Zevenbergen has been selected as juror of Artisans Works and Sculpture for the 2010 Edmonds Arts Festival.



TURN HEADS! WEAR JEWELRY ART!
If you wish to receive this newsletter electronically, email us at facereart@aol.com